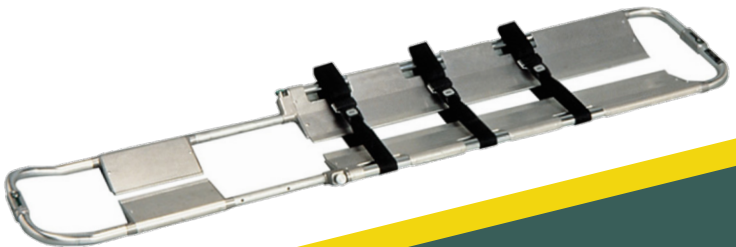


From The Name  
in Funeral  
Equipment...

# JUNKIN

## Funeral and Cemetery



## CHURCH TRUCK/CHANGING TABLE

### CHURCH TRUCK: CH-300

The Junkin Church Truck, constructed of anodized aluminum tubing, is sturdy for moving and displaying any size casket.

Convenient and easy to maneuver, the accordion x-design allows for four positions - folded for easy transport to fully extended for supporting a casket.

**DIMENSIONS:**

Position 1: Folded: 7" L x 30" H.

Position 2: 27" L x 29" H.

Position 3: 51" L x 26" H.

Position 4: 62½" L x 22½" H x 22" W.

Available in three anodized finishes: silver, gold, and bronze. Please specify color selection when ordering.



CH-300

### CHANGING TABLE: CT-150

Ideal for use in funeral homes and mortuaries. Made of sturdy, lightweight anodized aluminum. Allows the user to adjust table-top heights at both ends. The top is made of stain-resistant laminate and resists distorting or sagging. Also includes four swivel-locking wheels with brake.

**DIMENSIONS:**

78" L x 24" W x 32½" to 37" H.

WEIGHT: 100 lbs.

LOAD CAPACITY: 800 lbs.



CT-150

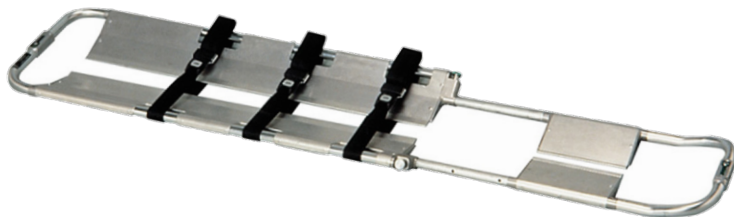
## STRETCHERS

### ALUMINUM BREAK-APART STRETCHER: JSA-400

Designed to gently maneuver the stretcher under the body without rolling or lifting. Features include sturdy, lightweight aluminum construction with an adjustable length and three restraint straps. Folds for easy storing and separates in half during application and removal.

**DIMENSIONS:** 66¼" L x 17½" W x 2⅞" D;  
Folded: 49½" L x 3½" D; Adjustable to 80".  
**LOAD CAPACITY:** 400 lbs.  
**SHIPPING WEIGHT:** 21½ lbs.

*JSA-400*



### ALUMINUM POLE STRETCHER: JSA-501-NA

Poles measure 1¼" with shaped hardwood handles. Construction is sturdy but light weight. Cover is durable 18 oz. vinyl coated nylon. Restraint straps (JSA-504) and replacement cover (JSA-601-B) are available.

**DIMENSIONS:** Open: 87" L x 22" W x 4½" H;  
Folded: 43½" L x 3½" W x 7½" H.  
**WEIGHT:** 14 lbs.

*JSA-501-NA*



## STRETCHERS

### EASY-FOLD STRETCHER: JSA-601-NA

Easily set up and compact for storing. This stretcher is light in weight with shaped hardwood handles. Cover is durable 18 oz. vinyl coated nylon. Straps (JSA-504) and replacement cover (JSA-601-B) are available.



JSA-601-NA

**DIMENSIONS:** Open: 87" L x 22" W x 4½" H;

Folded: 43½" L x 3½" W x 7½" H.

**WEIGHT:** Anodized aluminum pole – 14 lbs.

### EASY-FOLD WHEELED STRETCHER: JSA-602

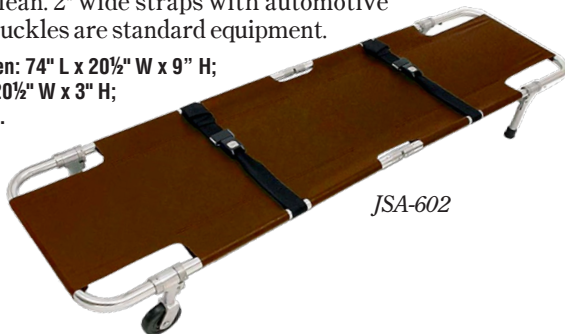
Made of 1" sturdy anodized aluminum tubing frame with flush folding hinges. 4" wheels and posts fold easily out of the way for compact storage. Cover is fabricated from tough 18 oz. green or brown vinyl coated nylon. Cover is fungus and rot resistant and easily wiped clean. 2" wide straps with automotive seatbelt type buckles are standard equipment.

**DIMENSIONS:** Open: 74" L x 20½" W x 9" H;

Folded: 36½" L x 20½" W x 3" H;

Wheel base: 53½".

**WEIGHT:** 13 lbs.



JSA-602

### EASY-FOLD PLAIN STRETCHER: JSA-603

Same frame and cover as Model JSA-602 but without wheels and posts. Folds for compact storage. 2" wide patient restraint straps with standard automotive seatbelt type buckles.

**DIMENSIONS:** Open: 74" L x 1¼" H;

Folded: 36½" L x 2¼" H.

**WEIGHT:** 9 lbs.



JSA-603

## MORTUARY COTS

### JUNKIN SINGLE PERSON MORTUARY GOT: MC-100A

Cot is built of sturdy anodized aluminum tubing that will not oxidize and will keep looking like new for years.



Closeup of handle



MC-100A

#### Additional Features:

- Legs lock automatically when unloading
- One person can load and unload
- Multiple level adjustment for bed to cot transfer
- Two locking swivel wheels
- Comes with heat sealed mattress and two restraint straps

**DIMENSIONS:** 78" L x 21" W.

**HEIGHT:** Minimum: 10"; Maximum: 32½".

**WEIGHT:** 58 lbs.

**LOAD CAPACITY:** 650 lbs.

### JUNKIN MORTUARY GOT COVER: MC-100A-COVER

Discretely covers the remains of a deceased during removal from a facility. (This is not a body bag.)

**COLOR:** Green or Burgundy.



MC-100A-Cover

### JUNKIN OVERSIZE SINGLE PERSON MORTUARY GOT: MC-100A-OS

Cot is built with the same sturdy anodized aluminum tubing and features as the MC-100A.



MC-100A-OS

#### Additional Features:

- Legs reinforced for oversize capacity
- Available with optional fold-away side rails as Part No. MC-100A-OSR

**DIMENSIONS:** 78" L x 25" W.

**HEIGHT:** Minimum: 10"; Maximum: 32½".

**WEIGHT:** 80 lbs.

**LOAD CAPACITY:** 900 lbs.

### **SUPERIOR LOWERING DEVICE: LD-3287-C, LD-3287-SS, LC-3287-CR, LD-3287-SSR**

Finished in heavy-duty, gleaming chrome plate, polished aluminium and stainless steel.

**Features:**

- Lifetime lubrication
- New and improved positive lock braking system



Finished in heavy-duty, gleaming chrome plate, polished aluminum and stainless steel.

**DIMENSIONS:** Closed: 67½" L x 26" W.

Adjusts to 95½" L x 40" W.

**SPEED CONTROL:** Complete on all models.

**LOAD CAPACITY:** 800 lbs.

### **LOWERING DEVICE WITH PLACER ARMS: 3287-CR CHROME 3287-SSR STAINLESS STEEL**

Includes all the same features as the Superior Lowering Device with the addition of placer arms. Check bars are located at either end of the Lowering Device to hold the casket motionless even on hilly terrain.

Finished in heavy-duty chrome plate, polished aluminum and stainless steel.



## DISPLAY CART

### DISPLAY CART: CH-100

Constructed of sturdy anodized aluminum tubing for a long lasting like-new appearance. Large five-inch wheels roll with ease over rough surfaces.

Six rubber tips will hold casket solidly in place. Shipped knocked down, easy assembly.

**DIMENSIONS:** 48" L x 19½" W x 21" H.

**WEIGHT:** 22 lbs.

**LOAD CAPACITY:** 700 lbs.



CH-100

# **JUNKIN**

502-775-8303 • [sales@junkinsafety.com](mailto:sales@junkinsafety.com) • 3121 Millers Lane • Louisville, KY 40216

[www.junkinsafety.com](http://www.junkinsafety.com)